

Upcoming New Style:



Stylish women's dress shoes for casual / work usage

Dr.
Comfort[®]

DJO Asia Pacific

Unit 1905, 19/F, Tower II | Grand Central Plaza
138 Shatin Rural Committee Road | Shatin | Hong Kong

www.DJOglobal.eu



⁺
MOTION IS MEDICINE[™]

©2015 DJO AP-00-3008AP-REV C

Dr.
Comfort[®]

The world at your feet

Therapeutic Shoes Designed
with Comfort in Mind



⁺
MOTION IS MEDICINE[™]

Design Built to Last

DJO Global is a world leader in the design, manufacture and distribution of quality medical devices, providing a wide range of solutions designed to improve muscular health, osteoarthritis and vascular health.

Dr. Comfort, established in 2002, has quickly become the worldwide expert in diabetic footwear. These shoes provide style, comfort and quality and can be worn to alleviate many foot conditions, helping to promote total foot and leg health.



75%
do not wear
the correct
shoe size¹

¹NIXON ET AL. "DO US VETERANS WEAR APPROPRIATELY?",
JOURNAL OF AMERICAN PEDIATRIC MEDICAL ASSOCIATION,
VOL. 96, NO. 4, JULY / AUG 2006.

Why choose Dr. Comfort?

- Variety of sizes and widths to accommodate most foot sizes and shapes
- Lightweight construction to reduce daily fatigue
- Increased depth to minimize any pressure
- High quality material to ensure breathability and flexibility around the foot
- Specially designed insoles to further support your foot
- Range of styles to meet everyday needs whilst providing therapeutic care

More than just a pair of shoes:

A solution for...

- Diabetic foot conditions
- Foot deformations, such as Hallux Valgus, bunions
- Arthritic conditions: osteoarthritis and rheumatoid arthritis
- Plantar fasciitis
- Injuries involving tendons, muscles and bones
- Swollen feet
- And more...

Guide for Diabetic Foot Care American Orthopaedic Foot and Ankle Society Guideline (www.aofas.org)



*Reimbursement Criteria for Therapeutic Shoes in various countries

Facts About Diabetic Feet

- Diabetes neuropathy reduces sensation in extremities, so foot injuries may not be noticed.
- Every 30 Seconds, a lower limb is lost to diabetes somewhere in the world.¹
- Up to 70% of people who undergo a lower extremity amputation die within 5 years.²
- Comprehensive Foot Care Program can reduce amputation rate by 45-85 %.³
- Studies show that only about a quarter of general population wear appropriately sized shoes. Individuals with diabetic foot ulceration are 5.1 times more likely to have poorly fitting shoes.^{4,6}
- The cost of healing a foot ulcer is conservatively estimated to be US\$7,000 to US \$45,000.⁵
- Lower-extremity complications in patients with diabetes are common, costly and associated with high rates of recurrence, morbidity and mortality, and the prevention of foot ulcers should be considered a major public health goal.⁵

Why Do Diabetics Need Special Shoes?

- Relative increased likelihood of death within 5 years
Up to:

80%

49%

20%

17%

Amputation/Foot Ulcer Colon Cancer Prostate Cancer Breast Cancer

One half of amputees die within 18 months and 80% won't survive five years. *Diabetes Forecast 2008.*

References:

1. "Put feet first prevent amputation" Diabetes and Foot Care, The International Diabetes Federation and the International Working Group on the Diabetic Foot. 2005
2. International Working Group on the Diabetic Foot/Consultative Section of the IDF. Amsterdam, the Netherlands, on DVD (www.idf.org/bookshop)
3. "Diabetes Programme" World Health Organization, 2014
4. Nixon et al. "Do US Veterans Wear Appropriately?", *Journal of American Pediatric Medical Association*, Vol. 96, No. 4, July / Aug 2006.
5. Armstrong DG: Is diabetic foot care efficacious or cost effective? *Ostomy Wound Manage* 47: 28, 2001.
6. Cavanagh P, "Footwear for people with diabetes: Where are we now?", 10th Anniversary Supplement to The Diabetic Foot Journal Vol.10 No.4, 2007.

Dr Comfort: customized measurement and fitting by foot care professionals.



Shoes size and width are measured by a unique Brannock device

Size Conversion

WOMEN			MEN		
US	EURO	UK	US	EURO	UK
4	34	1.5	6	39	5.5
5	35	2.5	7	40	6.5
6	36	3.5	8	41	7.5
7	37	4.5	9	42	8.5
8	38	5.5	10	43	9.5
9	39	6.5	10.5	44	10
10	40	7.5	11.5	45	11
11	41	8.5	12	46	11.5
12	42	9.5	13	47.5	12.5
			14	48	13.5
			15	50	14.5

Comfortable shoes for every situation -

The Dr. Comfort Classic Collection

Therapeutic Line Designed to meet your needs

For those people looking for increased comfort and durability in a shoe that will last.

Technical:

Double depth shoes, extra-grip soles, lightweight, soft uppers (Lycra/soft leather), easy access openings

Indications:

Bunions, hammertoes, enlarged feet and ankles, severe oedema, lifestyle requirements

Therapeutic Line

P21

**Smart Line** Shoes for office work and special occasions

For those who need special foot attention, whilst not compromising on style.

Technical:

Extra width in toe area, high quality, top grain soft leather uppers, lightweight design, smooth seams

Indications:

Arthritis (hip/knee), plantar fasciitis, back pain, high instep

Smart Line

P19



P17

Casual Line**Casual Line** Not just an everyday shoe

Ideal for people looking for functionality and comfort for their everyday activities, whilst balancing the requirements for foot health.

Technical:

Soft uppers (Lycra®/soft leather) for improved fit and breathability, easy access (contact closure® openings), extra light models

Indications:

Plantar fasciitis, foot deformities (bunions, Hallux Valgus), high instep, arthritis (hip/knee), back pain, swelling



P23

Sandal Line**Active Athletic Line** The sports shoe with a difference

Ideal for people who want to maintain a healthy lifestyle, whilst ensuring that the foot is well protected.

Technical:

Extra cushioning, extra width, strong rocker sole, lightweight, quick and easy openings

Indications:

Plantar fasciitis, back problems, Hallux Valgus, Achilles tendon, arthritis (hip/knee), high instep, swelling, orthotic care

Active Athletic Line

P13



Diabetes

All styles

except Ortho Sandals and Flex-OA shoes



Forefoot pain/ Tiring leg



Winner



Spirit



Performance



Refresh



Edward / Lucie X



Connor/Kelly



Bunions



Performance



Refresh



Brian



Annie



Carter / Marla



Connor/Kelly

Claw/ Mallet/Hammer toes/
Overlapping Toes

Brian



Annie



Carter



Marla



Edward X



Lucie X



Corns / Calluses



Brian



Annie



Carter



Marla



Greg



Sharon

Arch Tiredness /
Plantar Fasclitis

Conner



Kelly



Collin



Shannon



Performance



Katy



Foot Arthritis



Edward X



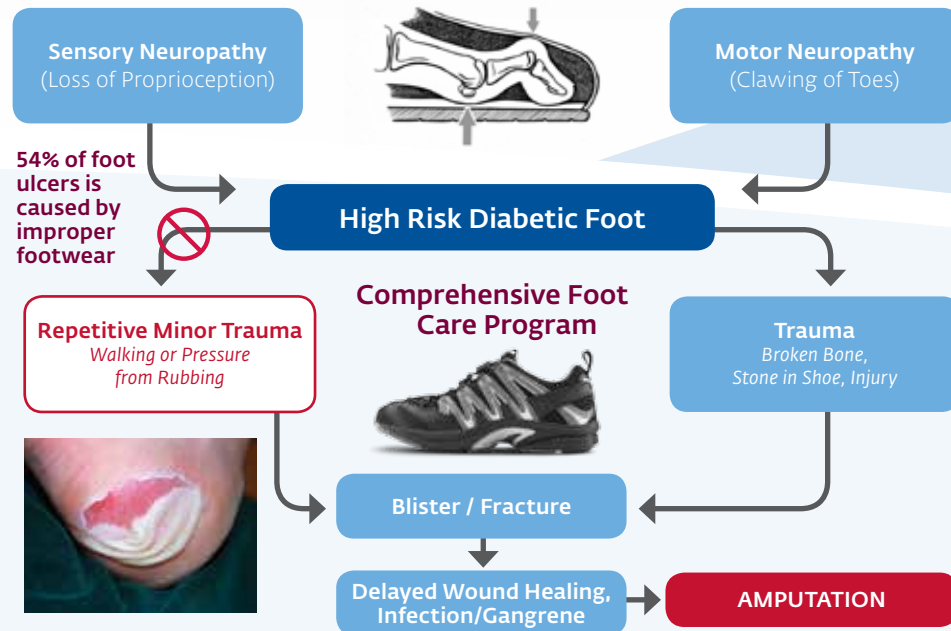
Lucie X

Dr. Comfort shoes are designed to accommodate feet with diabetes and deformities, please consult your health care professional for appropriate use / indication.

Therapeutic footwear and orthotic devices are effective in decreasing stress and strain at the ball of diabetic foot

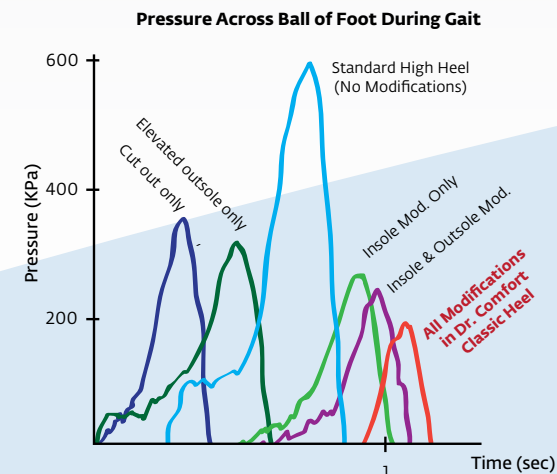
- Walking increases stress and soft tissue strain at the bottom aspect of the foot. Excessive stress underneath the diabetic foot may lead to ulceration.
- Patient with neuropathic foot should wear therapeutic shoes.
- The use of therapeutic footwear and orthotic devices help protect the neuropathic foot from injury by decreasing the amount of energy the tissue must absorb during walking.

Diabetic Progression of Injury



Lott DJ et al. "Effect of footwear and orthotic devices on stress reduction and soft tissue strain of the neuropathic foot." Clin Biomech (Bristol, Avon), 22(3):352 - 359, March 2007

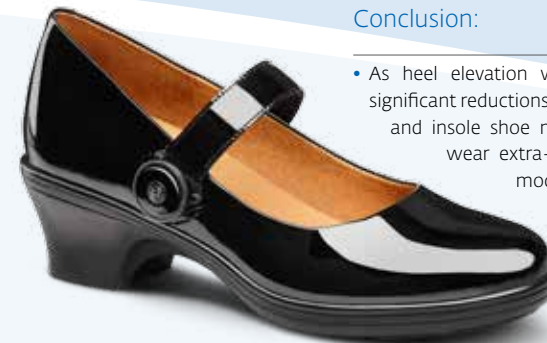
A recent study reviewing the impact of heel height demonstrated significant reductions (200%) in forefoot pressure with all modifications in the Dr. Comfort Classic Heel over the Standard High Heel.



Mean pressure at ball of foot with control shoe (no modifications) in light blue versus the various individual modifications in red. Note the near linear reduction in peak pressure as each modification is added.

Conclusion:

- As heel elevation will always produce higher forefoot pressure, significant reductions in loads can be achieved using combined outsole and insole shoe modifications. Some diabetic patient refuses to wear extra-depth designed shoes, but a shoes with such modifications may still be of value to reduce the likelihood of adverse pathology.



Lidtko RH et al. "Evaluation of High Heel Diabetic Shoes", American Podiatric Medical Association (APMA) National Conference, 2013

Ortho Sandal Range (P23-P24)

Effective in Correcting Body Alignment

Dual-Density Midsole

Encourages healthy foot motion by reducing shock to heels and toes

Built-in Orthosis

Supports the natural arch and relieves symptoms of plantar fasciitis

*Superior Wet/Dry Performance

(Microfiber / Mesh)

Integrated Post

Prevents pronation and promotes proper foot alignment while walking

*Adjustable contact closure Closing

*Rubber Outsole

Improves traction

Integrated Shank

Stabilizes the foot with every step taken

*Reimbursement Criteria for Therapeutic Shoes in various countries

Flex-OA – Shoes for Knee OA (P27-P28)

Benefit

- Clinically Proven to reduce dynamic knee joint load during walking by 20%.
- Reduce pain from Knee OA.



Flexible Footwear Reduces Dynamic Joint Loads in Knee Osteoarthritis: Results of a 6 Month Randomized Controlled Trial." Shakoor et al. Arthritis & Rheumatism 64 (10): Oct 2012

Improvement in knee loading after use of specialized footwear for knee osteoarthritis: Results of a 6-month pilot investigation." Shakoor et al. Arthritis & Rheumatism. 29 Jan 2013

Why treat the foot for knee pain ?

- Research shows the foot is the originating factor for lower extremity pain.



Patented X - Sole Clinically Proven to Reduce Knee Load



- X- sole is created to relieve knee pain by "flexure zones" placed at major flexion points required during walking to allow natural "barefoot-like" movement. Therefore, stress at the inner side of the knee is reduced.



PERFORMANCE / MEN

Lightweight cross-trainer (available in double depth).
Foot arch stabilizer for improved posture during exercise.
Delivered with classic / no-tie elastic laces for an individual fit.



Colour	Widths	Sizes	Item Code
Black Grey	M / W / XW	6 -12, 13, 14, 15	7610
Grey Yellow			7645
Metallic Blue			7650
Metallic Red			7670

REFRESH / WOMEN

Lightweight cross-trainer (available in double depth).
Foot arch stabilizer for improved posture during exercise.
Delivered with classic / no-tie elastic laces for an individual fit.



Colour	Widths	Sizes	Item Code
Blue	M/W/XW	4 - 11	3950
Berry			3976
Lime Green			3925



CHAMPION / MEN

Full top grain leather trainer (available in double depth and with / without **contact closure**). Arch stabilizer for improved balance.
contact closure closure with no-tie elastic lace.



Colour	Widths	Sizes	Item Code
Black	M / W / XW	6 -12, 13, 14, 15	6710
White			6740

SPIRIT **contact closure** /
WOMEN

Full top grain leather trainer (available in double depth and with / without **contact closure**). Arch stabilizer for improved balance.
contact closure closure with no-tie elastic lace.



Colour	Widths	Sizes	Item Code
Black contact closure	M / W / XW	6 -12, 13, 14, 15	2410
White contact closure			2440

JASON / MEN

Lightest diabetic athletic shoe on the market.
Using modern PU printing techniques for design and patterns, the only stitching required is around the area of the tongue.
Available with both elastic and cotton laces.



Colour	Widths	Sizes	Item Code
Grey	M / W / XW	7.5 - 12, 13, 14	77710
Green			77725
Blue			77750
Red			77770



KATY / WOMEN

Lightest diabetic athletic shoe on the market.
Using modern PU printing techniques for design and patterns, the only stitching required is around the area of the tongue.
Available with both elastic and cotton laces.



Colour	Widths	Sizes	Item Code
Blue / Green	M / W / XW	5.5 - 10, 11	37725
Blue / Grey			37750
Purple			37755
Pink / Blue			37770

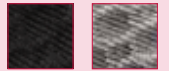


CHRIS / MEN

Super lightweight outsoles with rubber inserts at toe and heel.
Made with mesh uppers.



Colour	Widths	Sizes	Item Code
Black	M / W / XW	7.5 - 12, 13, 14	77810
Grey		12.5, 13.5 not available	77880



MEGHAN / WOMEN

Super lightweight outsoles with rubber inserts at toe and heel.
Made with mesh uppers.



Colour	Widths	Sizes	Item Code
Blue	M / W / XW	5.5 - 10, 11	37850
Purple		10.5 not available	37855



BRIAN / MEN

Softest comfort shoes (available in double depth).
Breathable and stretchable Lycra with **contact closure**
closure. Ideal for bunions, hammertoes and sensitive
feet.



Colour	Widths	Sizes	Item Code
Black	M / W / XW	6 -12, 13, 14, 15	6510
Acorn			6520

JUSTIN / MEN

Everyday casual / dress shoes.
High polish top grain leather.
European design.



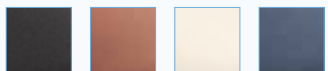
Colour	Widths	Sizes	Item Code
Black	M / W / XW	6 -12, 13, 14, 15	5510
Chestnut			5520

ANNIE / WOMEN

Softest comfort shoes (available in double depth).
Breathable and stretchable Lycra with **contact closure**
closure. Ideal for bunions, hammertoes and sensitive
feet.



Colour	Widths	Sizes	Item Code
Black	M / W / XW	5.5 - 11	4510
Acorn			4520
Beige			4530
Blue			4550



BETSY / WOMEN

Everyday casual / dress shoes.
High polish top grain leather.
European design.

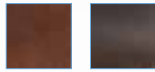


Colour	Widths	Sizes	Item Code
Black	M / W / XW	5.5 - 11, 12	4210
Ice			4240
Burgundy			4270

RUK / MEN



Softest comfort shoes (available in double depth). Breathable and stretchable Lycra with **contact closure**. Ideal for bunions, hammertoes and sensitive feet.



Colour	Widths	Sizes	Item Code
Brown	M/W/XW	7.5 - 14	7920
Rust			7930

TONYA / WOMEN



Softest comfort shoes (available in double depth). Breathable and stretchable Lycra with **contact closure**. Ideal for bunions, hammertoes and sensitive feet.



Colour	Widths	Sizes	Item Code
Black	M/W/XW	6 - 11	2710
Camel			2730
Chocolate			2720



MEN CLASSIC
P21

WOMEN CLASSIC HEELS
P22

CLASSIC / MEN

Classic all-day dress shoes.
Lightweight outsole. Invisible stitch detail.
Clean simple lines, high-polished, hand-burnished leather.



Colour	Widths	Sizes	Item Code
Black	M / W / XW	6 - 12, 13, 14, 15	8410

WING / MEN

Traditional classic dress shoes.
Lightweight outsole. Invisible stitch detail.
Fine leather interiors and hand burnished finishes.
Wing-tips design.



Colour	Widths	Sizes	Item Code
Black	M / W / XW	6 - 12, 13, 14, 15	8310
Chestnut			8320

CAPTAIN / MEN

Classic dress shoes.
Lightweight outsole. Invisible stitch detail.
Cap-toe design.



Colour	Widths	Sizes	Item Code
Black	M / W / XW	6 - 12, 13, 14, 15	8110

COCO / WOMEN

Classic Heels Comfort Collection - Award Winning Design

The elegance of a heeled shoe designed specially for women with diabetes.
Our patent pending forefoot design offers pressure relief for comfort and the BOA closure system provides an adjustable secure fit.



Colour	Widths	Sizes	Item Code
Black	M / W / XW	5.5 - 11, 12	0710
Taupe			0730

CINDEE / WOMEN



Colour	Widths	Sizes	Item Code
Black	M / W / XW	5.5 - 11, 12	0410
Taupe			0430

CARMEN / WOMEN



Colour	Widths	Sizes	Item Code
Black	M / W / XW	5.5 - 11, 12	0110
Grey			0180

EDWARD X / MEN • LUCIE X / WOMEN

Double depth shoes with deep and wider toe box.
Accommodates internal braces and AFOs.
Perfect solution for severe oedema.
Accommodates severe hammertoes.

EDWARD X / MEN

Colour	Widths	Sizes	Item Code
Black	M / W / XW	6 - 12, 13, 14, 15	9610

LUCIE X / WOMEN

Colour	Widths	Sizes	Item Code
Black	M / W	4 - 12	2610
	XW	4 - 11	



CARTER / MEN • MARLA / WOMEN

Machine washable double depth shoes.
Breathable and stretchable Lycra with adjustable two way **contact closure** closure. Ideal for bunions, hammertoes and loved ones with incontinence.

CARTER / MEN

Colour	Widths	Sizes	Item Code
Black	M / W / XW	8 - 12, 13, 14	9110

MARLA / WOMEN

Colour	Widths	Sizes	Item Code
Black	M / W / XW	5.5 - 14	0910



CONNER / MEN

Leading orthotic sandal.
Accommodates bunion aids.
Restores foot's natural alignment.
Fastening with a secure **contact closure** closure.



Colour	Widths	Sizes	Item Code
Black	W	8 - 13	5410
Chocolate			5420
Camel			5430

COLLIN / MEN

Extremely lightweight thong style orthotic sandal.
Correct posture.
Accommodates bunion aids.
Alleviates foot pain, back pain,
shin splints and aching legs.



Colour	Widths	Sizes	Item Code
Black	W	8 - 13	5310
Chocolate			5320
Camel			5330

KELLY / WOMEN

Leading orthotic sandal.
Accommodates bunion aids.
Restores foot's natural alignment.
Fastening with a secure **contact closure** closure.



Colour	Widths	Sizes	Item Code
Black	W	5 - 10	1410
Camel			1430
Light Blue			1450

SHANNON / WOMEN

Extremely lightweight thong style orthotic sandal.
Correct posture.
Accommodates bunion aids.
Alleviates foot pain, back pain,
shin splints and aching legs.



Colour	Widths	Sizes	Item Code
Black	W	5 - 10	1310
Camel			1330
Light Blue			1350
Red			1370

GREG / MEN

Open Comfort Collection

Removable back strap to convert to a slide.
Removable foot beds for custom orthotics.



Colour	Widths	Sizes	Item Code
Black	M / W	7 - 14	115010
Brown			115020

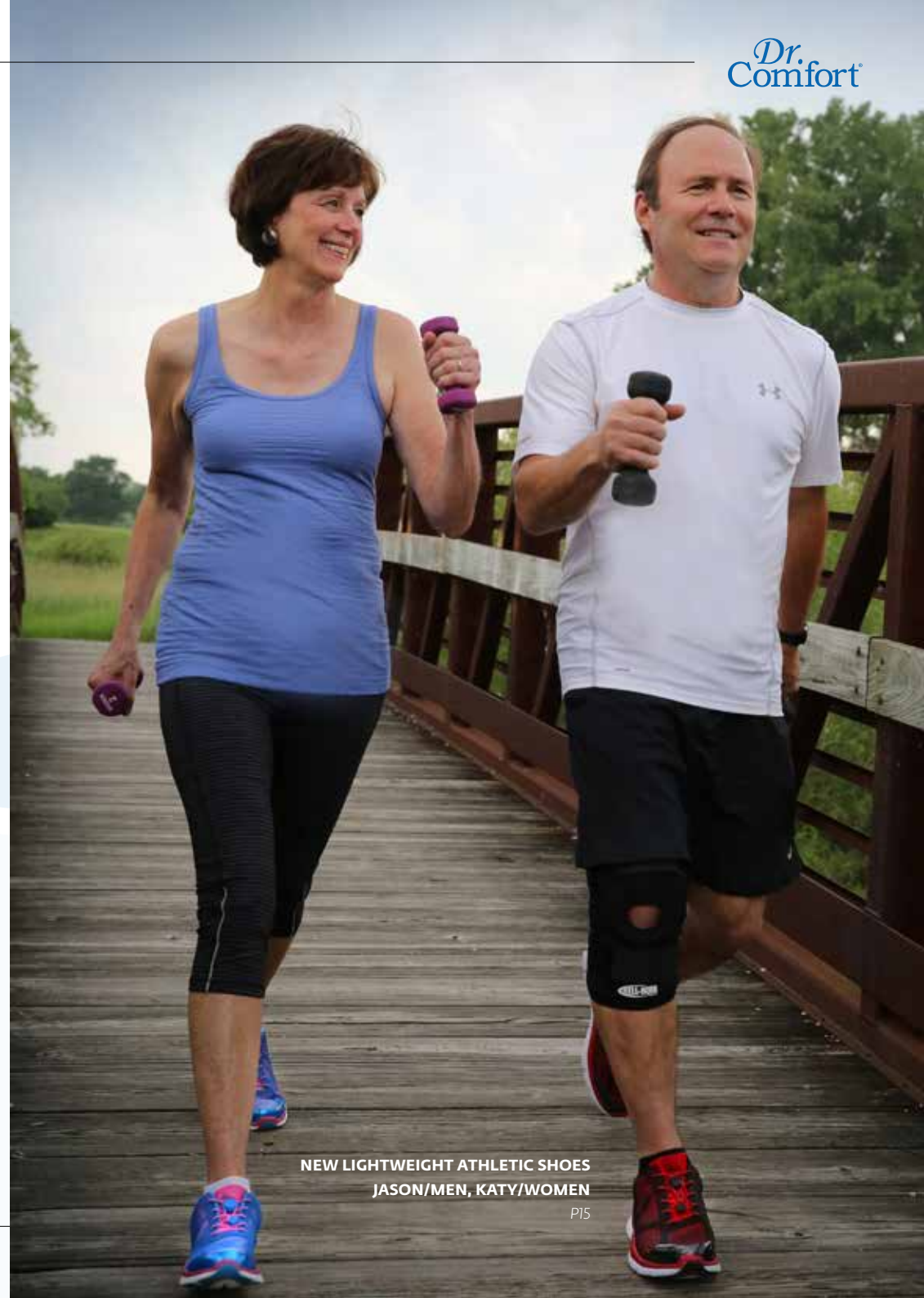
SHARON / WOMEN

Open Comfort Collection

Exotic textures and classically appointed jewel
accessories provide a feminine finish.
Removable foot beds for custom orthotics.



Colour	Widths	Sizes	Item Code
Black	M / W	5 - 11	110310
Green			110325
Peanut brittle			110330



NEW LIGHTWEIGHT ATHLETIC SHOES
JASON/MEN, KATY/WOMEN

P15

Flex-OA: Shoes for Knee OA

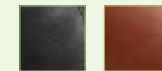
Developed to reduce pain from knee osteoarthritis.
Patented X-sole clinically proven to reduce knee loads by 20% on average.
All styles (US Patent Number US7954261)

GARY / MEN

Colour	Widths	Sizes	Item Code
Black	MW / XW	8 - 14	225010
Grey			225080

SANDY / WOMEN

Colour	Widths	Sizes	Item Code
Blue	MW / XW	5 - 11	220050
Grey			220080

**ROY / MEN**

Colour	Widths	Sizes	Item Code
Black	MW / XW	8 - 14	225110
Brown			225120

AMY / WOMEN

Colour	Widths	Sizes	Item Code
Black	MW / XW	5 - 11	220110
Taupe			220130

Wound Care Management by Orthotics and Therapeutic Footwear

Case Pedorthist

Yoshimitsu Suzuki

IBS Corporation Tokyo, Japan

Patient profile

Patient: 61 year-old female

Case: Left Foot Burn at 1 year-old

Surgery: Partial Foot Amputation and Skin Grafted

Chief Complaint: Recurrent intractable plantar ulceration of the left foot

Causes: No awareness of bony prominent and lack of even distribution by orthotics

Open Wound



Diagnosed Intractable Plantar ulcer at tuberosity of 5th metatarsal bone (14 November 2012)

X-ray



Prescription

1. Total Contact Orthotics
2. Dr. Comfort Therapeutic Shoes & Socks
 - Laura (Shoes Style 3010) & Transmet Comfort Socks
 - Negative heel sole modification on the left shoe

A Complete Recovery (1 February 2013)



References:

1. Suzuki et al. Latest diabetes that all understands: Treatment, Care, Education "Selection of the footwear", Shorinsha Inc., 2011
2. Suzuki et al. Latest Edition "Diabetes Footcare Technique for Nurses" Foot Assessment / Check shoes, Medical View Co., Ltd. 2014

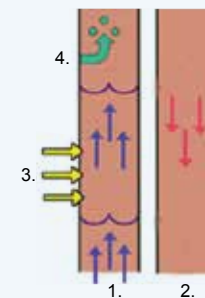
VenaPro Intermittent Pneumatic Compression Device for Chronic Wound Healing

Indications

1. FDA approved VenPro for these Indications:
 - Reduce wound healing time
 - Aid in the treatment of: stasis dermatitis, venous stasis ulcers, arterial and diabetic leg ulcers, chronic venous insufficiency and reduction of oedema in the lower limbs
2. 707 articles were identified from 1970 to 2012. IPC device gets SORT-A recommendation for treatment of other complications of surgery related to impaired venous, arterial and interstitial circulation.*

Mechanisms of action of IPC for wound healing*:

- (1) ↑ Venous flow
- (2) ↑ Arterial flow
- (3) ↑ Return of interstitial fluids from the third space to the veins
- (4) ↑ Venous flow produces shear stress on the endothelial cells, which in response production of anti-thrombotic, pro-fibrinolytic, vasodilatory and repair promoting substances



Part #	Description
30M	VenaPro System
3111-024	Compliance Data Communicator Cable
3111-020	VenaPro Sleeve Extender
3111-057	VenaPro Charger
3111-058	VenaPro Clinical Charger (3 prong)

NEW LIGHTWEIGHT ATHLETIC SHOES

* "Adjuvant compression therapy in orthopaedic surgery - an evidence-based review" Arverud et al. Eur Orthop Tr



Foot + Orthosis + Shoe = The perfect combination

Extra width and depth of Dr. Comfort optimize functions of foot orthosis.



Procure® AFO fits well inside Dr. Comfort for assisting ambulation from patient suffering drop foot.

Aircast Hallufix® fits comfortably inside Dr. Comfort for relieving pain from bunions during walking.



Dr. Comfort Inserts

- Designed to provide the perfect fit for patients living with diabetes, arthritis, plantar fasciitis and a range of other medical conditions. For people who just want to take care of their feet, too.

Removable Gel Cloud

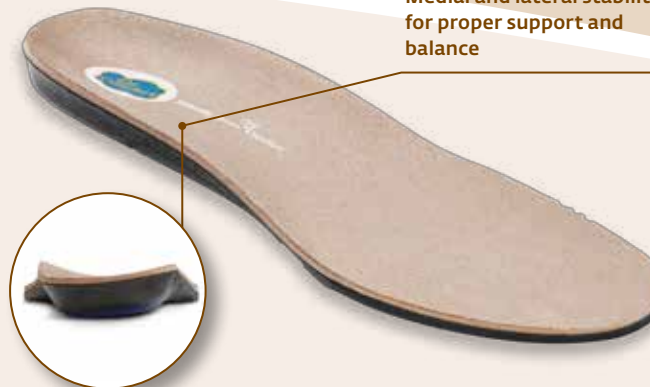
Gel metatarsal and heel pad increase foot comfort



Provide shock absorption to reduce joint stress



Medial and lateral stability for proper support and balance



Introducing EXOS® REFORMABLE OFF-THE-SHELF ORTHOTICS



The Microcarbon provide the strongest yet customize fit orthotics right from the professions hands directly to patients.



FIT YOUR FEET IN JUST MINUTES.

EXOS® reformable orthotics can be personalized...
as often as necessary!

WHAT MAKES EXOS THE PERFECT FIT?

EXOS® does more than change how shoes feel. Our exclusive carbon nano-tube shell allows you to reform the orthotics anytime - for a fit that's always personal. Over-the-counter products don't deliver that level of care and quality.

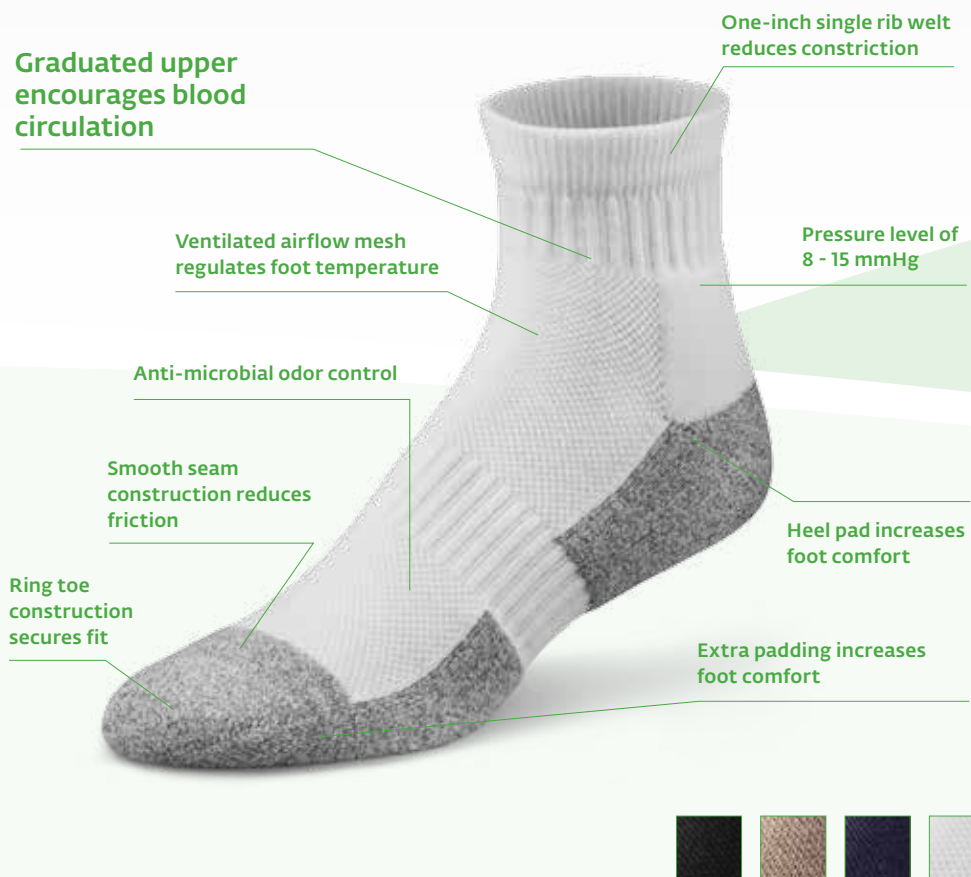
ITEM CODE	ITEM DESCRIPTION	MENS	WOMENS
EXOS-OTS-XA	EXOS INSERT W4.0-5.0	-	4.0 - 5.0
EXOS-OTS-A	EXOS INSERT W5.5-6.5	-	5.5 - 6.5
EXOS-OTS-B	EXOS INSERT M5.5-6.5/W7-8	5.5 - 6.5	7.0 - 8.0
EXOS-OTS-C	EXOS INSERT M7-8/W8.5-9.5	7.0 - 8.0	8.5 - 9.5
EXOS-OTS-D	EXOS INSERT M8.5-9.5/W10-11	8.5 - 9.5	10.0 - 11.0
EXOS-OTS-E	EXOS INSERT M10-11/W11.5-12.5	10.0 - 11.0	11.5 - 12.5
EXOS-OTS-F	EXOS INSERT M11.5-12.5	11.5 - 12.5	-
EXOS-OTS-G	EXOS INSERT M13-14	13.0 - 14.0	-
EXOS-OTS-H	EXOS INSERT M14.5-15	14.5 - 15.0	-

Dr. Comfort Socks

- Designed for people living with diabetes, arthritis, oedema, neuropathy and circulation issues.

- Made with Nano Bamboo Charcoal Fibers**

Nano Bamboo Charcoal Fibers release Far Infrared Rays that may promote blood circulation and anion production. It is also a natural deodorizer.



OVER THE CALF LENGTH COMFORT SOCKS (FOR LONG TRIPS)



Size	Men	Women
XS		5 - 7
S	6.5 - 8	7.5 - 9
M	8.5 - 9	9.5 - 11
L	10.5 - 12	11.5 - 13
XL	12.5 - 15	

EXTRA ROOMY COMFORT SOCKS



Size	Men	Women
S	6.5 - 8	7.5 - 9
M	8.5 - 10	9.5 - 11
L	10.5 - 12	11.5 - 13

ANKLE LENGTH COMFORT SOCKS



Size	Men	Women
XS		5 - 7
S	6.5 - 8	7.5 - 9
M	8.5 - 9	9.5 - 11
L	10.5 - 12	11.5 - 13
XL	12.5 - 15	

TRANSMET COMFORT SOCKS (FOR PARTIAL FOOT AMPUTATION)



Size	Men	Women
S	6.5 - 8	7.5 - 9
M	8.5 - 10	9.5 - 11
L	10.5 - 12	11.5 - 13

Available in various lengths and colours.

KEY TO SHOE RATINGS

- 1** The BEST shoe for the foot problem
- 2** A GOOD shoe for this problem
- 3** An ACCEPTABLE shoe with possible modifications or adjustments

	Last		Pronation/ Supination	Charcot	Internal Brace
Men's	Beach Comber	MEN EVA	2	2	2
	Boss	MEN EVA	3	3	2
	Brian	MEN EVA	1	1	1
	Brian X	MENX	1	1	1
	Captain	MEN MD	2	3	3
	Champion Plus	MEN EVA	1	2	2
	Champion	MEN EVA	1	3	2
	Champion X	MENX	1	1	1
	Classic	MEN MD	2	3	3
	David	MEN EVA	2	2	2
	Douglas	MEN EVA	2	1	1
	Edward X	MENX	1	1	1
	Endurance Plus	MEN EVA	1	3	2
	Endurance	MEN EVA	1	3	2
	Eric	MEN MD	2	3	3
	Fisherman	MEN EVA	2	2	2
	Frank	MEN MD	2	3	3
	Justin	MEN EVA	2	2	2
	Leader	MEN MD	2	3	3
	Mike	MEN EVA	2	2	2
	Patrick	MEN EVA	2	2	2
	Performance	MEN EVA	1	3	2
	Performance X	MENX	1	1	1
	Protector	MEN EVA	3	3	2
	Ranger	MEN EVA	3	3	2
	Robert	MEN EVA	2	2	2
	Scott	MEN EVA	2	2	2
	Stallion	MEN EVA	2	2	2
	William	MEN EVA	2	2	2
	William X	MENX	1	1	1
	Wing	MEN MD	2	3	3
	Chris	MEN EVA	2	2	3
	Jason	MEN EVA	2	2	3
	Joseph	MEN MD	2	3	3

	High Instep	Plantar Fasciitis (Heel Pain)	Bunions	Hammertoes	Edema	Diabetes
2	2	2	2	2	2	1
2	2	2	2	2	2	1
1	2	1	1	1	1	1
1	2	1	1	1	1	1
3	2	2	2	2	2	1
2	1	2	2	2	2	1
3	1	2	2	2	2	1
1	1	1	1	1	1	1
3	2	2	2	2	2	1
2	2	2	2	2	2	1
1	2	1	1	1	1	1
1	1	1	1	1	1	1
3	1	1	1	1	2	1
3	1	1	1	1	2	1
3	2	2	2	2	2	1
2	2	2	2	2	2	1
3	2	2	2	2	2	1
2	2	2	2	2	2	1
3	2	2	2	2	2	1
2	2	2	2	2	2	1
2	2	2	2	2	2	1
2	2	2	2	2	2	1
2	2	2	2	2	2	1
2	2	2	2	2	2	1
2	2	2	2	2	2	1
1	1	1	1	1	1	1
1	2	2	2	2	2	1
2	1	2	1	1	1	1
2	1	2	1	1	1	1
3	2	2	2	2	2	1

Dr. Comfort shoes are designed to accommodate feet with diabetes and deformities, please consult your health care professional for appropriate use / indication.

KEY TO SHOE RATINGS

- 1 The BEST shoe for the foot problem
- 2 A GOOD shoe for this problem
- 3 An ACCEPTABLE shoe with possible modifications or adjustments

Women's	Last	Pronation/ Supination	Charcot	Internal Brace
Annie	WOMEN EVA	1	1	1
Annie X	WOMEN EVA X	1	1	1
Betty	WOMEN ERO	2	1	1
Betsy	WOMEN ERO	3	3	3
Breeze	WOMEN ERO	3	3	3
Carmen	WOMEN HEEL	3	3	3
Cathy	WOMEN HEEL	3	3	3
Cindee	WOMEN HEEL	3	3	3
Coco	WOMEN HEEL	3	3	3
Collette	WOMEN EVA	2	2	2
Delight	WOMEN ERO	2	3	3
Flute	WOMEN ERO	3	3	3
Kristin	WOMEN ERO	2	3	3
Laura	WOMEN EVA	2	2	2
Lindsey	WOMEN EVA	2	2	2
Lucie X	WOMEN ERO X	1	1	1
Lu Lu	WOMEN ERO	2	3	3
Maggy	WOMEN EVA	2	2	2
Maggy X	WOMEN EVA X	1	1	1
Merry-Jane	WOMEN EVA	3	3	3
Paradise	WOMEN ERO	3	3	3
Patty	WOMEN EVA	2	2	2
Refresh	WOMEN ERO	1	3	2
Refresh X	WOMEN ERO X	1	1	1
Spirit Plus	WOMEN ERO	1	3	2
Spirit	WOMEN ERO	1	3	2
Spirit X	WOMEN ERO X	1	1	1
Sunshine	WOMEN ERO	3	3	3
Suzie	WOMEN ERO	3	3	3
Victory Plus	WOMEN ERO	1	3	2
Victory	WOMEN ERO	1	3	2
Vigor	WOMEN ERO	3	3	2
Wave	WOMEN ERO	3	3	3
Meghan	WOMEN ERO	2	2	3
Katy	WOMEN ERO	2	2	3

High Instep	Plantar Fasciitis (Heel Pain)	Bunions	Hammertos	Edema	Diabetes
1	2	1	1	1	1
1	2	1	1	1	1
1	2	1	1	1	1
2	3	2	2	3	1
2	3	2	2	3	1
3	2	3	3	3	1
3	2	3	3	3	1
3	2	3	3	3	1
3	2	3	3	3	1
2	2	2	2	2	1
3	2	2	2	3	1
2	3	2	2	3	1
3	2	2	2	3	1
2	2	2	2	2	1
2	2	2	2	2	1
1	2	1	1	1	1
3	2	2	2	3	1
2	2	2	2	2	1
1	2	1	1	1	1
2	3	2	2	3	1
2	3	2	2	3	1
2	2	2	2	2	1
3	1	1	1	2	1
1	1	1	1	1	1
3	1	1	1	2	1
3	1	1	1	2	1
1	2	1	1	1	1
2	3	2	2	3	1
2	3	2	2	3	1
3	1	1	1	2	1
3	1	1	1	2	1
2	2	2	2	2	1
2	3	2	2	3	1
2	1	2	1	1	1
2	1	2	1	1	1

Dr. Comfort shoes are designed to accommodate feet with diabetes and deformities,
please consult your health care professional for appropriate use / indication.

Style Code Page

AMY BLACK	220110	30
AMY TAUPE	220130	30
ANNIE ACORN	4520	17
BRIAN ACORN	6520	17
BRIAN BLACK	6510	17
CAMEN BLACK	0110	22
CAMEN GREY	0180	22
CAPTAIN BLACK	8110	21
CARTER BLACK	9110	21
CHRIS BLACK	77810	16
CHRIS GREY	77880	16
CINDEE BLACK	0410	22
CINDEE TAUPE	0430	22
CLASSIC BLACK	8410	21
COCO BLACK	0710	22
COCO TAUPE	0730	22
COLLIN BLACK	5310	26
COLLIN CAMEL	5330	26
COLLIN CHOCOLATE	5320	26
CONNER BLACK	5410	25
CONNER CAMEL	5430	25
CONNER CHOCOLATE	5420	25
EDWARD X BLACK	9610	23
GARY BLACK	225010	29
GARY GREY	225080	29
GREG BLACK	115010	27
GREG BROWN	115020	27
JASON BLACK	77710	15
JASON BLUE	77750	15
JASON GREEN	77725	15
JASON RED	77770	15
JUSTIN BLACK	5510	18
JUSTIN CHESTNUT	5520	18
KATY GREEN	37725	15
KATY PINK	37770	15
KATY PURPLE	37755	15
KATY TURQUOISE	37750	15
KELLY BLACK	1410	25
KELLY CAMEL	1430	25
KELLY LIGHT BLUE	1450	25
LUCIE X BLACK	2610	23
MARLA BLACK	0910	24
MEGHAN BLUE	37850	16
MEGHAN PURPLE	37855	16
PERFORMANCE		
BLACK GREY	7610	13

Style Code Page

PERFORMANCE		
BLACK GREY	7610	13
PERFORMANCE		
GREY YELLOW	7645	13
REFRESH BLUE	3950	13
REFRESH BERRY	3976	13
REFRESH LIME GREEN	3925	13
ROY BLACK	225110	30
ROY BROWN	225120	30
RUK BROWN	7920	19
RUK RUST	7930	19
SANDY BLUE	220050	29
SANDY GREY	220080	29
SHANNON BLACK	1310	26
SHANNON CAMEL	1330	26
SHANNON LIGHT BLUE	1350	26
SHANNON RED	1370	26
SHARON BLACK	110310	27
SHARON GREEN	110325	27
SHARON PEANUT		
BRITTLE	110330	27
SPIRITblackcontact closure	2410	14
SPIRITwhitecontact closure	2440	14
TONYA BLACK TONYA	2710	19
CAMEL TONYA	2730	19
CHOCOLATE WING	2720	19
BLACK WINNER BLACK	8310	21
WINNER WHITE	6710	14
	6740	14



WOMEN CLASSIC HEELS P22

Code Style Page

0110	CAMEN BLACK CAMEN	22
0180	GREY CINDEE BLACK	22
0410	CINDEE TAUPE COCO	22
0430	BLACK	22
0710	COCO TAUPE	22
0730	MARLA BLACK SHANNON	22
0910	BLACK SHANNON CAMEL	24
1310	SHANNON LIGHT BLUE	27
1330	SHANNON RED KELLY	27
1350	BLACK	27
1370	KELLY CAMEL	27
1410	KELLY LIGHT BLUE	25
1430	SPIRIT BLACK contact closure	25
1450	SPIRIT WHITE contact closure	25
2410	LUCIE X BLACK TONYA	14
2440	BLACK TONYA CAMEL	14
2610	TONYA CHOCOLATE	23
2710	REFRESH LIME GREEN	19
2720	REFRESH BLUE REFRESH	19
2730	BERRY ANNIE ACORN	19
3925	COLLIN BLACK COLLIN	13
3950	CHOCOLATE COLLIN	13
3976	CAMEL CONNER BLACK	13
4520	CONNER CHOCOLATE	17
5310	CONNER CAMEL JUSTIN	26
5320	BLACK	26
5330	JUSTIN CHESTNUT BRIAN	26
5410	BLACK	25
5420	BRIAN ACORN WINNER	25
5430	BLACK WINNER WHITE	25
5510	PERFORMANCE BLACK	18
5520	GREY PERFORMANCE	18
6510	GREY YELLOW	17
6520	RUK BROWN	17
6710	RUK RUST	14
6740	CAPTAIN BLACK WING	14
7610	BLACK CLASSIC BLACK	13
	CARTER BLACK	13
7645		13
7920		19
7930		19
8110		21
8310		21
8410		21
9110		21

Code Style Page

9610	EDWARD X BLACK	23
37725	KATY GREEN	15
37750	KATY TURQUOISE	15
37755	KATY PURPLE	15
37750	KATY TURQUOISE	15
37755	KATY PURPLE	15
37770	KATY PINK	15
37850	MEGHAN BLUE	16
37855	MEGHAN PURPLE	16
77710	JASON BLACK	15
77725	JASON GREEN	15
77750	JASON BLUE	15
77770	JASON RED	15
77810	CHRIS BLACK	16
77880	CHRIS GREY	16
110310	SHARON BLACK	26
110325	SHARON GREEN	26
110330	SHARON PEANUT BRITTLE	26
115010	GREG BLACK	27
115020	GREG BROWN	27
220050	SANDY BLUE	29
220080	SANDY GREY	29
220110	AMY BLACK	30
220130	AMY TAUPE	30
225010	GARY BLACK	29
225080	GARY GREY	29
225110	ROY BLACK	30
225120	ROY BROWN	30



WOMEN CLASSIC HEELS P22

FOOTWEAR MATTERS

Foot problems associated with diabetes are a significant portion of the health risk and cost.

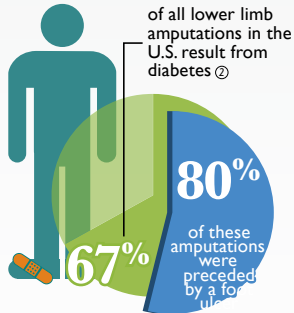
IMPAIRED SENSATION OR FOOT PAIN

60%-70%
of diabetes patients have mild to severe forms of nervous system damage

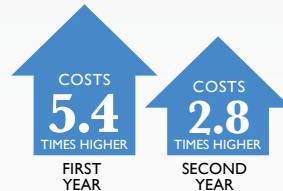
CAN CAUSE

impaired sensation or pain in the feet ①

RISK OF AMPUTATIONS



HIGH COSTS FOR FOOT ULCER CARE



AFTER FIRST FOOT ULCER

Compared with diabetic patients without foot ulcers

For many diabetes patients, not wearing therapeutic footwear isn't worth the risk.

Studies have shown therapeutic footwear can decrease ulcers and amputations in diabetic patients.

FOOT CARE PROGRAMS



AMPUTATIONS



Foot care programs may include:

- Risk assessment
- Foot care education and preventive therapy
- Treatment of foot problems
- Referral to specialists ①

THERAPEUTIC FOOTWEAR



FOOT ULCERS



AMPUTATIONS



AFTER 2 YEARS

- Study examined the impact of therapeutic footwear on diabetic complications (foot ulcers and amputations)
- Patients with Type 2 Diabetes mellitus (T2DM)
- Sample size = 26,437 people
- Followed patients for 1 year before and 2 years after receiving therapeutic shoes ②

CUSTOM ORTHOTIC INSOLES



FOOT REULCERATIONS



AMPUTATIONS



AFTER 2 YEARS

- 79% reulceration rate before treatment
- 54% amputation rate before treatment ③

FOOT CARE TIPS

12 STEPS TO HEALTHIER, HAPPIER FEET



1 Take care of your diabetes



7 Wear shoes & socks at all times



2 Check your feet every day



8 Protect your feet from hot & cold



3 Wash your feet every day



9 Keep the blood flowing to your feet



4 Keep your skin soft & smooth



10 Be more active



5 Smooth corns & calluses gently



11 Be sure to ask your doctor



6 Trim your toenails each week



12 Get started now

①Center for Diseases Control (CDC) "National Diabetes Fact Sheet, 2011" ②Reiber G. Epidemiology and Health Care Costs for Diabetic Foot Problems. In: Vries A, Giurini J, LaGerfo F, eds. Diabetic Foot: Medical and Surgical Treatment. Totowa, NJ: Humana Press; 2002:35-58 ③The costs of diabetic foot: The economic case for the limb salvage team; Boston, Mass; and Georgetown, Tex. ④Minshall ME, Durden E, Huse DM, McMorrow D, Little RH. Characteristics and Health Care Resource Utilization of Type 2 Diabetes Mellitus (T2DM) Patients Using Therapeutic Footwear. Diabetes, 2014; 63(Suppl. 1):A163. ⑤How Effective Is Orthotic Treatment in Patients with Recurrent Diabetic Foot Ulcers? Journal of the American Podiatric Medical Association 2013; 103:281-290.