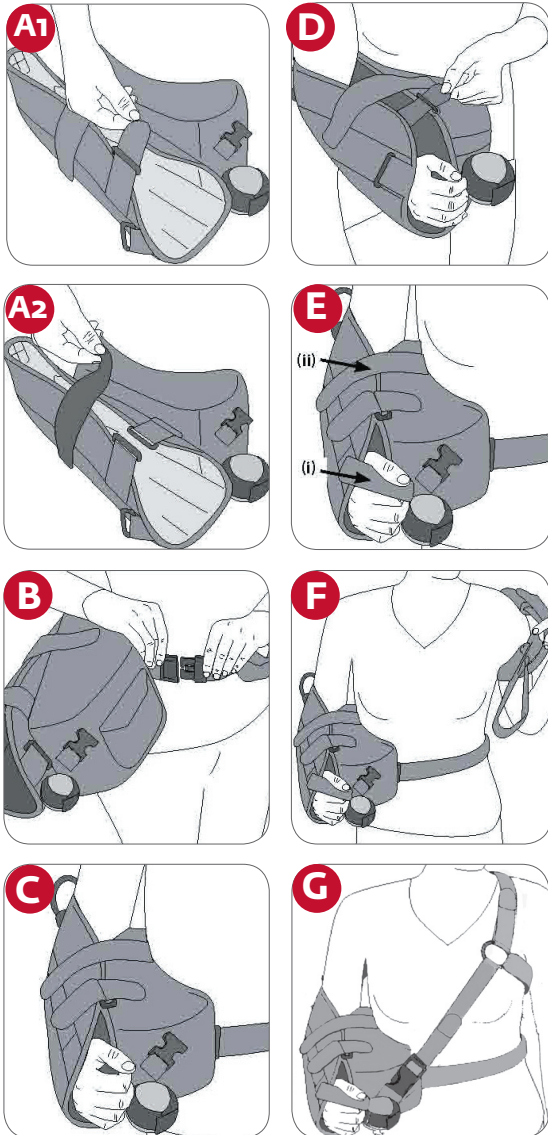


Before using this device please read the following instructions completely and carefully.

Correct application is vital to the proper functioning of this device.

APPLICATION INSTRUCTIONS:

To ensure proper fit, product should be sized on patient pre-operatively. Product is shipped with strapping and sling configured to address post-op or rehab for a right shoulder/arm. The symbol for Right (R) on cushion should be facing up. To convert for left shoulder/arm, detach sling from abductor cushion; flip cushion over so waist buckle is to front and the Left (L) symbol is facing up; attach sling to outside of cushion with Velcro strips.



- 1) Release waist belt on cushion, Velcro strips at wrist position on front of sling and forearm strap (fig A).
- 2) Align cushion on the injured side at waist/hip level with elbow fixed at 90°. Place cushion so line on top of cushion is parallel to the front of your body (if you stand at a table, the line should be parallel to the table).
- 3) Bring waist strap from cushion around back of waist and secure buckle at front of pillow (fig B). Adjust waist strap and trim as necessary for proper fit.
- 4) Place forearm into sling with arm as far back as possible in the sling (fig C). Secure Velcro straps at wrist position by first anchoring the strap closest to cushion, on cushion. Feed outside Velcro strap through inside D-ring and secure strap on outside of sling (fig D). Place small mesh thumb strap (i) between thumb and forefinger and secure on sling. Secure forearm strap (ii) to sling and cushion (fig E).
- 5) Using your free arm reach behind your body and slip arm through shoulder strap (fig F). This motion is similar to a putting on a backpack. One strap should be over the unaffected shoulder (clavicular area) and the other under the arm (straps B & C). Secure end of clip on Strap A to mate at front of cushion (fig G). Adjust and trim all straps for proper fit by removing Y-tab on end of straps, trim to proper length, replace Y-tab.
- 6) Adjust ALL straps for adequate stabilization of injured shoulder. Remove Y-tabs on strap ends and trim as needed. Replace Y-tabs and secure straps.
- 7) For exercise and rehab detach the outside Velcro strap at wrist area to increase the range of motion.

NOTE:

Large, flat O-rings on front (Pectoral/Clavicle) and back (Scapula) should be positioned for maximum patient comfort.

FOR O.R. APPLICATION:

Complete application steps 1 – 4 followed by: Unfasten one end of axilla (underarm) strap. This strap is strap C for right arm or strap B for left arm. Bring shoulder strap (strap A) over and around neck area and bring axilla (underarm) strap under arm and feed through flat O-ring. Secure strap with Velcro tab.

STEP DOWN OPTION FOR REHAB:

To use the UltraSling IV ER without the Abductor Cushion, remove waist strap from Cushion, thread waist strap through small D-rings located on front and back of sling. Secure strap around waist with Velcro tabs. Trim as needed.

In addition to the UltraSling IV ER DJO Global offers a complete line of shoulder immobilization products.

INTENDED USE/INDICATIONS:

For protocols involving immobilization in external rotation, Glenohumeral dislocation/subluxation, and Capsular Shifts. Use after posterior shoulder stabilizations, post-operative Bankart procedures, and for post-operative positioning after release of severe anterior capsule contracture. Also intended for soft tissue strains/repairs.

CONTRAINDICATIONS:

None.

WARNINGS AND PRECAUTIONS:


If you experience any pain, swelling, sensation changes, or any unusual reactions while using this product, consult your medical professional immediately.

WARRANTY:

DJO, LLC will repair or replace all or part of the unit and its accessories for material or workmanship defects for a period of six months from the date of sale.

CLEANING INSTRUCTIONS:

Hand wash in cold water 30°C/85°F. Hang dry.



UltraSling IV® ER

All the advantages of the standard version, with external rotation. For protocols involving immobilization in external rotation, the UltraSling ER IV was designed to provide a comfortable proper fit, every time. Ideal for preferred positioning following: Capsular shifts, Post-operative Bankart procedures, Glenohumeral dislocations and subluxation, Post-operative care after release of severe anterior capsule contracture, Adhesive Capsulitis release and manipulation.

Part Number (X=size)	Description	Size
11-1304-X	UltraSling IV ER, 15 Degree	
11-1305-X	UltraSling IV ER, 30 Degree	
25-0446-3	UltraSling IV, Strap Kit	S/M
25-0446-5	UltraSling IV, Strap Kit	L/XL

Measure below elbow crease to base of index finger, fits right or left arm. x = Size

x = 2 = S	Up to 11"
x = 3 = M	11" - 13"
x = 4 = L	13" - 15"
x = 5 = XL	15"+

For single patient use only. (RX Product) Latex free

MATERIAL CONTENT: Nylon, Polyester, Spandex, Polyurethane

For more information, please contact your DonJoy Territory Manager or Authorized Distributor



DJO, LLC | A DJO Global Company
T 800.336.6569 **D** 760.727.1280 **F** 800.936.6569
 1430 Decision Street | Vista, CA 92081-8553 | U.S.A.
DJOglobal.com

Together in Motion™